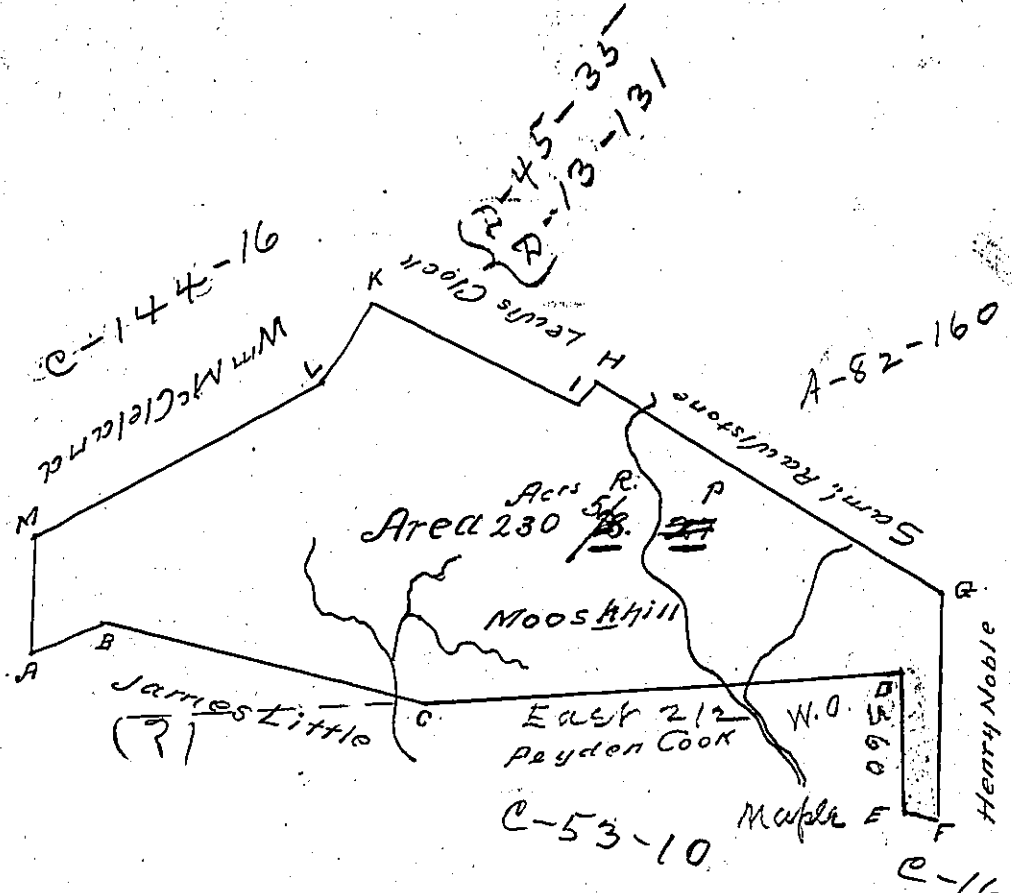


The Rev. Matt. Henderson
C-64-205



Beginning at a Post at A thence
 N^o 73 E 32 P^s to a Box at B
 S^o 73 E 146 D^o to a Post C
 East 212 D^o to a WOX D
 South 60 D^o to a Maple E
 S^o 73 E 8 D^o to a Post F
 N^o 3 1/2 E 97 D^o to a Post G

N^o 58 W 185 P^s to a Post at H
 S^o 60 W 8 D^o to a WOX I
 N^o 62 W 101 to a Post at J
 S^o 35 W 36 D^o to a Post at L
 S^o 65 W 143 D^o to a WOX at M
 South 46 D^o to the Beginning

The above is a Draught of a Tract of Land lying upon the Waters of Robinsons Run Washington County Surveyed in pursuance of a warrant from Philadelphia dated March 1st 1785 for Joseph Beeler Containing ^{Acres P. P.} 230 ^{7/8} ~~2.27~~ with the usual allowance

Pusley Nevill } D.S.
 Matt^o Ritchie }

John Lukens Esq }
 Sur^o Gen^l }

IN TESTIMONY that the above is a copy of the original remaining on file in the Department of Internal Affairs of Pennsylvania, made conformably to an Act of Assembly approved the 16th day of February, 1833, I have hereunto set my Hand and caused the Seal of said Department to be affixed at Harrisburg, this Second day of November 1903

Isaac P. Brown
 Secretary of Internal Affairs